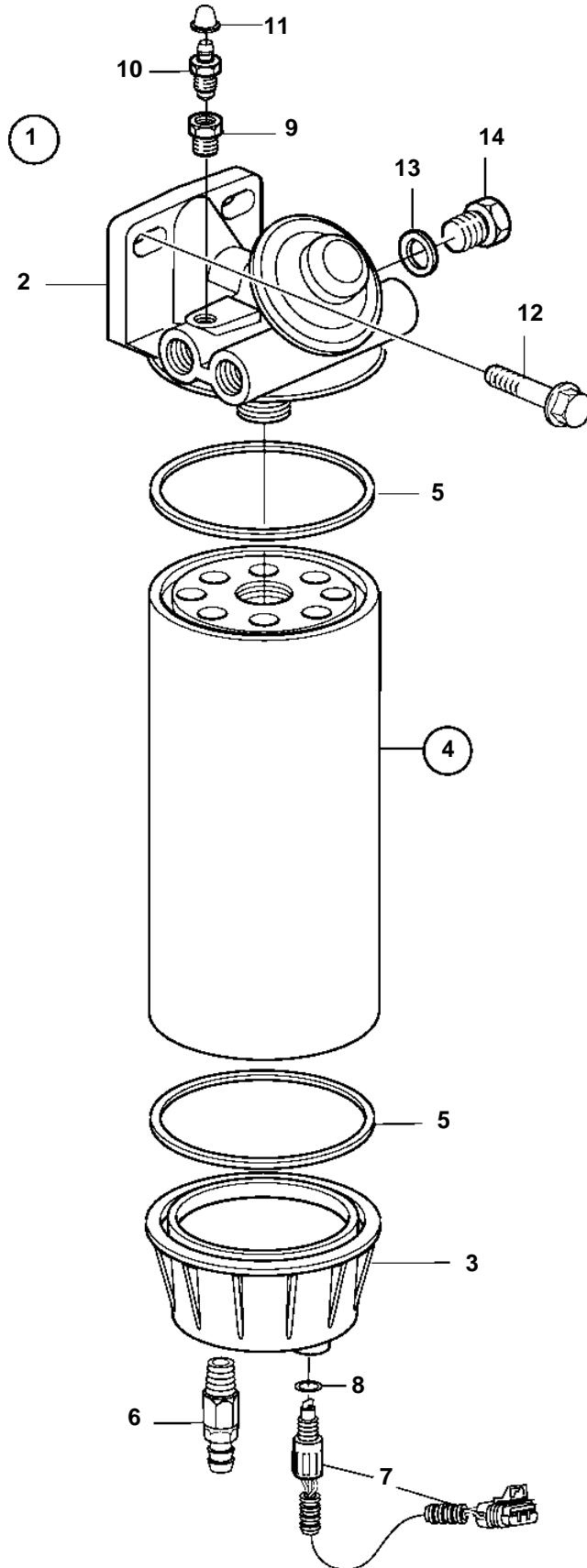


D12C-A MP, D12D-A MP, D12D-B MP, D12D-A MH, D12D-B MH



D12C-A MP, D12D-A MP, D12D-B MP, D12D-A MH, D12D-B MH

| REF | PART NO. | QTY | DESCRIPTION | NOTES |
|-----|----------|-----|-----------------------|-----------|
| 1 | 3817516 | 1 | Fuel filter | (3832690) |
| 2 | | 1 | · Filter housing | |
| 3 | | 1 | · Bowl | |
| 4 | 3817517 | 1 | · Fuel filter kit | (3828838) |
| 5 | | 2 | · · Gasket | |
| 6 | 949918 | 1 | · Drain cock | |
| 7 | 3588916 | 1 | · Sender, water level | (874109) |
| 8 | 3831094 | 1 | · · O-ring | |
| 9 | | 1 | · Nipple | |
| 10 | 20548012 | 1 | · Tap | (1330191) |
| 11 | 20547976 | 1 | · Protecting cover | (656456) |
| 12 | 946472 | 2 | Screw | |
| 13 | 11996 | 1 | Gasket | |
| 14 | 960631 | 1 | Plug | |